

智能装备
Intelligent Equipment

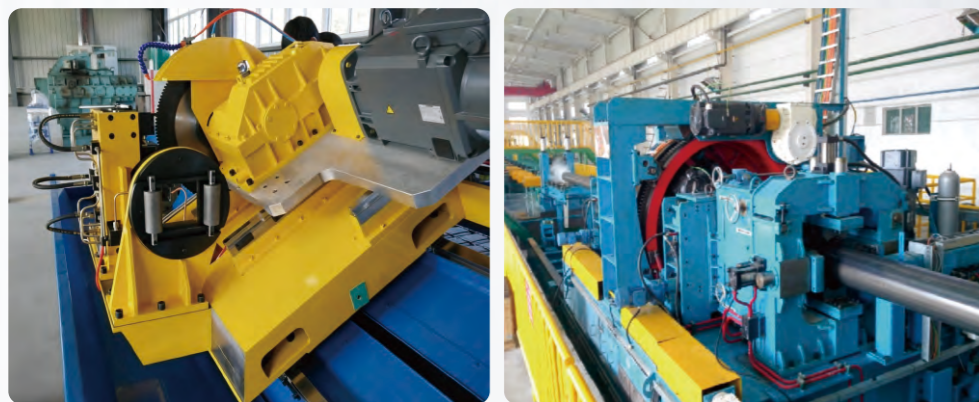
▶ 内毛刺刮刀
Inner Bead Remover



▶ 立式活套
Vertical Accumulator



▶ MCM系列数控铣锯
MCM Series Cold Saw Cutters



钢管产线MES系统与数字孪生
Steel Pipe Production Line: MES & Digital Twin Integration

MES系统功能
MES System Functions

工艺参数实时采集
Real-time Collection of Process Parameters

生产统计与追溯
Production Statistics & Full Traceability

设备维护与预警
Equipment Maintenance & Intelligent Early Warning

可视化电子看板
Visual Electronic Dashboards

视频监控集成
Video Surveillance & Monitoring Integration

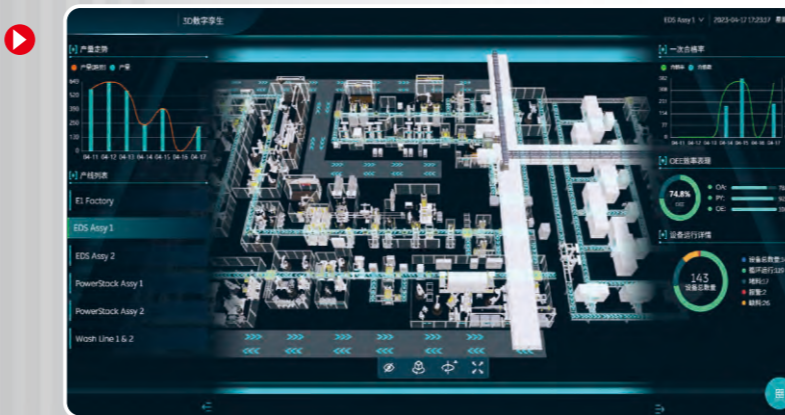
系统集成与扩展
System Integration & Scalability

数字孪生虚实联动
Digital Twin Virtual-Physical Interaction

三维可视化映射
3D Visualization Mapping

数据实时驱动
Real-Time Data-Driven Operations

报警与预测性维护
Alarm Management and Predictive Maintenance



SEIND 先德

先德
Seind Intelligent Equipment
智能装备



先德智能装备股份有限公司
Seind Intelligent Equipment Co., Ltd

Tel: +86-573-82616033
Web: www.seind.com.cn
Add: No 378, Zheng Yuan Road, Jiaxing City, Zhejiang Province, China.

公司简介

COMPANY PROFILE



上海先德企业集团成立于2001年,是集智能制造装备,电气自动化与信息化软件于一体的综合性整体解决方案服务商及装备供应商。旗下拥有先德智能装备、先德电气系统工程、萤山软件信息科技三家控股子公司。

公司秉持“匠心制造,用心服务”的经营理念,专注于为新能源汽车及一般工业领域提供定制化智能装备与数字化软件的研发、制造、销售及全周期服务。并与蔡司、柯马、ABB、西门子、蔚来、零跑、北京汽车、宝钢等知名企业建立了长期战略合作。

以科技创新为引擎,公司荣获国家创新发明奖、国家高新技术企业、专精特新企业、绿色工厂等资质,获批嘉兴市研发中心,拥有发明专利4项、实用新型34项、软件著作权30项,并通过ISO9001、ISO14001、ISO45001管理体系认证。

“以德为先”是先德集团一贯坚持的经营理念 and 宗旨,通过不断提升自我,增强客户满意度,在业内树立良好的口碑和品牌价值。

Established in 2001, Seind Group is a comprehensive integrated solutions provider and equipment supplier, specializing in intelligent manufacturing equipment, electrical automation, and information software. The group consists of three major subsidiaries: Seind Intelligent Equipment, Seind Electrical Systems Engineering, and Yingshan Software Information Technology.

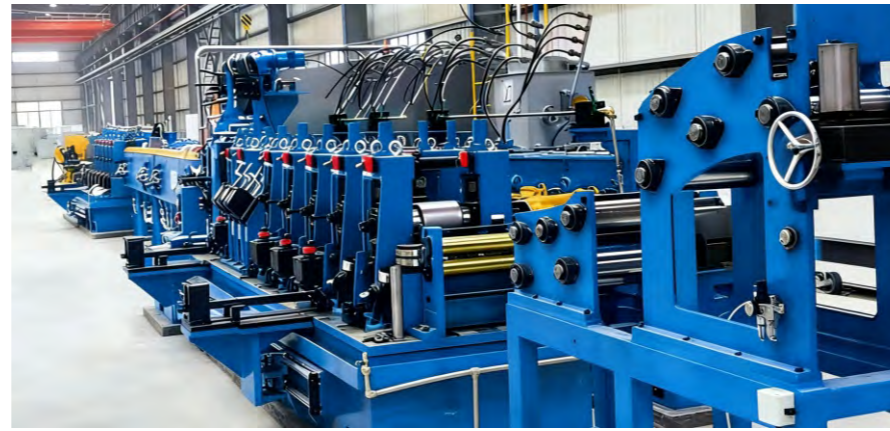
Adhering to the core philosophy of "Precision Craftsmanship & Dedicated Service," Seind focuses on the R&D, manufacturing, sales, and full-lifecycle services of customized intelligent equipment and digital software for the New Energy Vehicle (NEV) and general industrial sectors. We have established long-term strategic partnerships with industry leaders such as Carl Zeiss, Comau, ABB, Siemens, NIO, Leapmotor, BAIC, and Baosteel.

Peculiar, and Innovative" (SFPI) Enterprise, and a "Green Factory." We have earned the National Innovation and Invention Award and established the Jiaxing Municipal R&D Center. Our intellectual property portfolio includes 4 invention patents, 34 utility model patents, and 30 software copyrights. Furthermore, we have obtained ISO 9001, ISO 14001, and ISO 45001 management system certifications.

"Integrity First" is the enduring principle of Seind Group. Through continuous self-improvement and a commitment to customer satisfaction, we have built an excellent reputation and significant brand value within the industry.

76X4.5高频焊管生产线

76X4.5 ERW Tube Mill Line



材料 Material	SPCC,SPHF590
屈服强度 Yield Strength	550MPa
带钢厚度范围 Strip Thickness Range	1.0-4.5mm
外径范围 OD Range	Ø32-Ø76mm
外径公差 OD Tolerance	±0.08mm
生产速度 Production Speed	80m/min(Max)

76×4高频焊管生产线

76×4 ERW Tube Mill Line



材料 Material	SPCC,SPHF590
屈服强度 Yield Strength	550MPa
带钢厚度范围 Strip Thickness Range	1.0-4.0mm
外径范围 OD Range	Ø32-Ø76mm
外径公差 OD Tolerance	±0.08mm
生产速度 Production Speed	80m/min(Max)



65×6.5高频焊管生产线

65×6.5 ERW Tube Mill Line

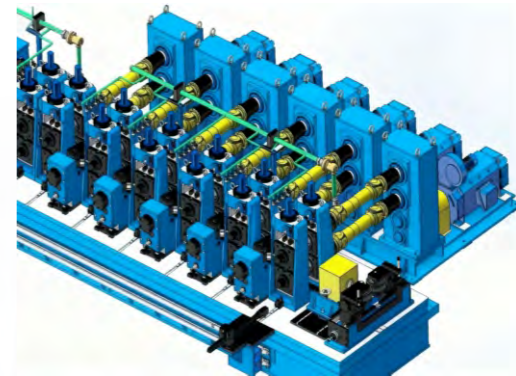
材料 Material	26MnB5,34MnB5
屈服强度 Yield Strength	≤680MPa
带钢厚度范围 Strip Thickness Range	1.5-6.5mm
外径范围 OD Range	Ø21.7-Ø65mm
外径公差 OD Tolerance	±0.08mm
生产速度 Production Speed	60m/min(Max)

50.8X8.5高频焊管生产线

50.8X8.5 ERW Tube Mill Line



材料 Material	34MnB5,DP980
屈服强度 Yield Strength	≤980MPa
带钢厚度范围 Strip Thickness Range	2.0-8.5mm
外径范围 OD Range	Ø21.7-Ø50.8mm
外径公差 OD Tolerance	±0.08mm
生产速度 Production Speed	60m/min(Max)



89X10 高频焊管生产线

89X10 ERW Tube Mill Line

材料 Material	26MnB5,34MnB5,38MnB5
屈服强度 Yield Strength	≤600MPa
带钢厚度范围 Strip Thickness Range	2.0-10.0mm
外径范围 OD Range	Ø30-Ø95mm
外径公差 OD Tolerance	≤0.5%*OD
生产速度 Production Speed	40m/min(Max)

台湾508mm高频焊管生产线

Taiwan 508mm High-Frequency Welded Pipe Production Line



材料 Material	J55,N80,P110
屈服强度 Yield Strength	≤965MPa
带钢厚度范围 Strip Thickness Range	6.0-18mm
外径范围 OD Range	Ø219-Ø508mm
生产速度 Production Speed	30m/min(Max)